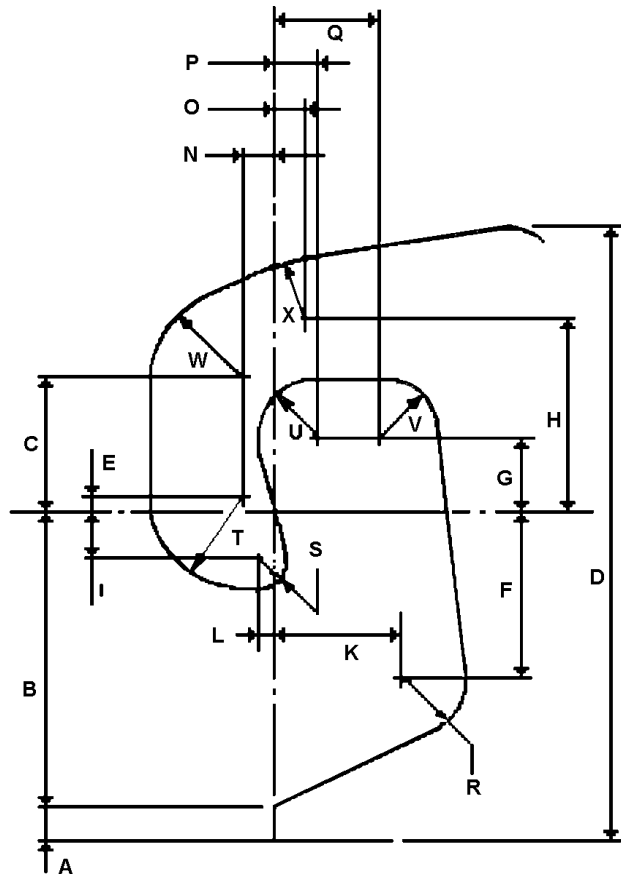


NMRA RECOMMENDED PRACTICES	
<b>COUPLER CONTOUR</b>	
Issue Date	<b>Aug. 1957</b>   <b>RP 21.1</b>

## NMRA RECOMMENDED PRACTICES RP-21.1 Coupler Contour



This sheet has been prepared in order to establish the basis for compatibility amongst the greatest number of couplers adhering to generally prototypical appearance.

Dimensions in this sheet will be found to be in agreement with **RP-21.2** where dimensions are repeated.

SCALE	A	B	C	D	E	F	G	H	I	K	L
HO	0.010	0.100	0.045	0.200 ----- 0.210	0.005	0.055	0.025	0.065	0.015	0.035	0.005

SCALE	N	O	P	Q	R	S	T	U	V	W	X
HO	0.010	0.010	0.015	0.035	0.020R	0.010R	0.030R	0.020R	0.020R	0.030R	0.020R